



Our Future Paget Vision



Our Future Paget Vision

Our Future Paget vision outlines how the new hospital could look like, situated to the rear of where James Paget Hospital currently stands. These outline plans have been produced to help show our staff, our patients, and our communities the size, scale and location of our new hospital – created through input from our staff and expert health planners, and incorporating national guidance from the New Hospital Programme.



Our Design Principles

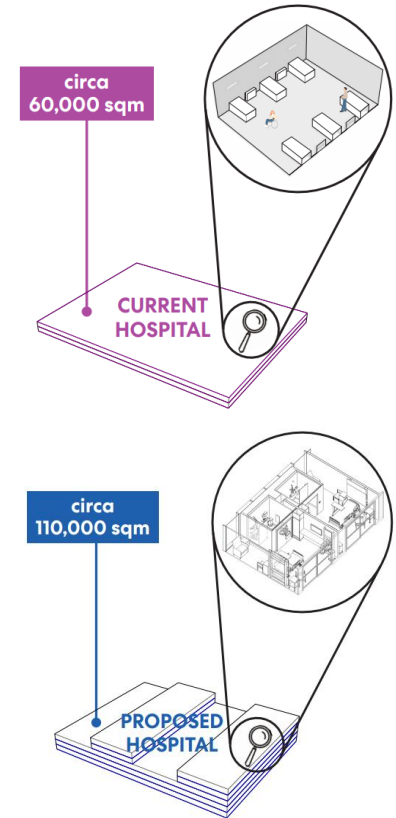


Seven key design principles inform the design of the new hospital.

During the early stages of the project, the Trust and the design team explored many different options for the building and tested them against these design principles.



Our Current Site



The new hospital will be larger than the existing hospital, and will have around 600 beds and new improved space standards, including all wards having single en-suite bedrooms in line with international standards of care. Clinical spaces will be designed to modern standards; corridors and public areas will be wide and generous maximising patient wellbeing and safety.

Our Vision



The vision for the Future Paget Programme is to create a seamless integration between the hospital building and the local landscape, using the space to the west of our current hospital estate, and by building vertically.



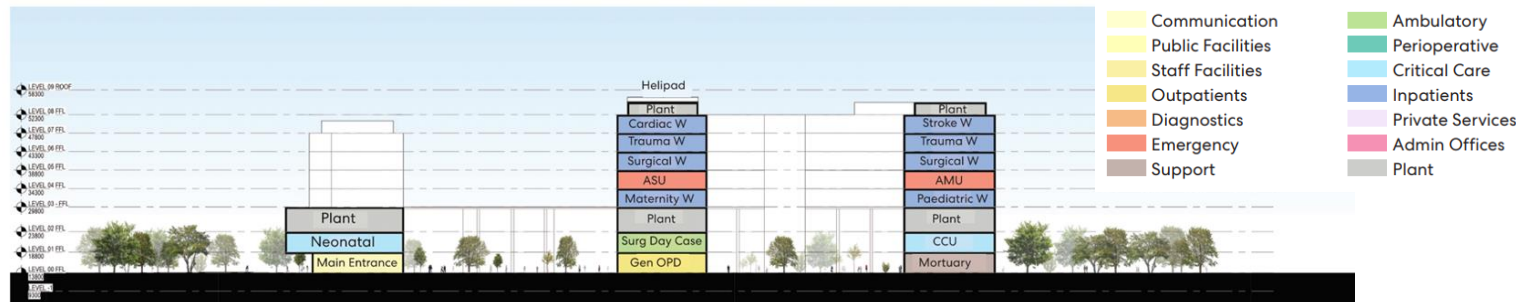
This is an artist's impression of the Future Paget Vision, which shows the current proposal of our new hospital building and site within this stage of planning.

Our New Hospital

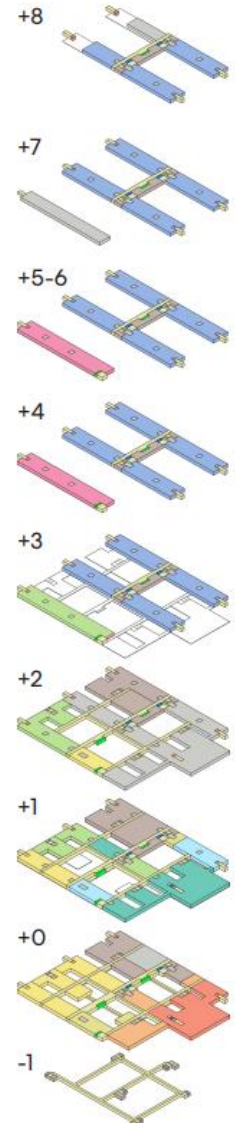
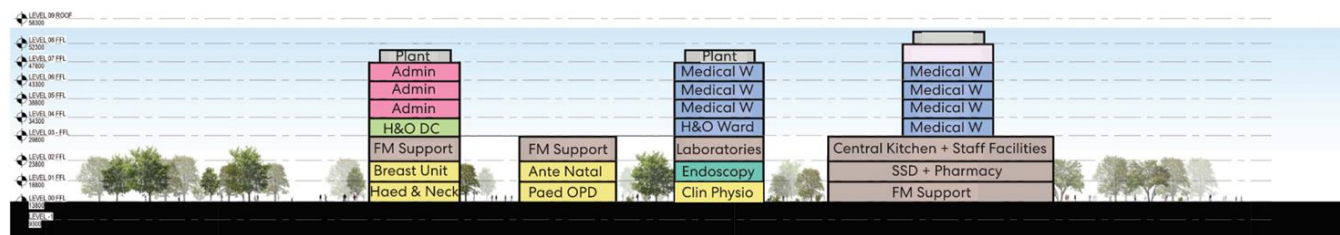


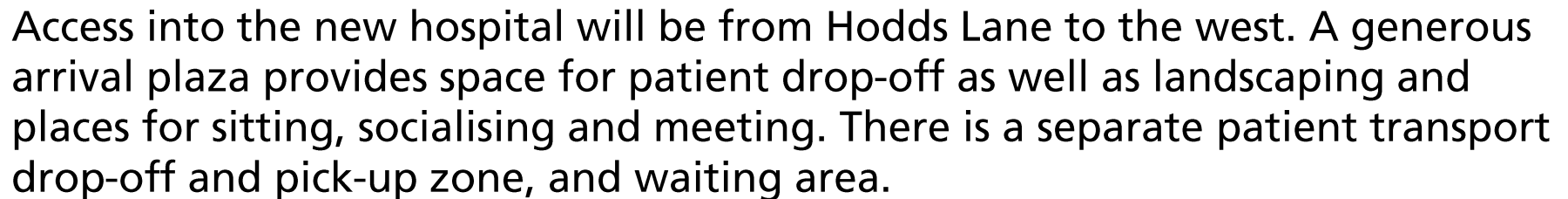
Our hospital is organised into three key components:

- 1. Podium level** (ground/first floor) – containing clinical areas like the emergency department, maternity suite, operating theatres, as well as estates and public areas
- 2. Interstitial level** (second floors) – supplying building services like ventilation, electrical distribution, plumbing etc
- 3. Wards** (top five floors) – individual inpatient bedrooms with views over the landscape to east and west



Section CC





Vehicular circulation is kept to the perimeter of the site to create a pedestrian priority zone in the centre, with parking distributed around the new building and on the existing hospital site.

Retained Estate



The Future Paget vision retains many of the non-RAAC buildings on the existing site, and incorporates their use in planning for a new hospital.

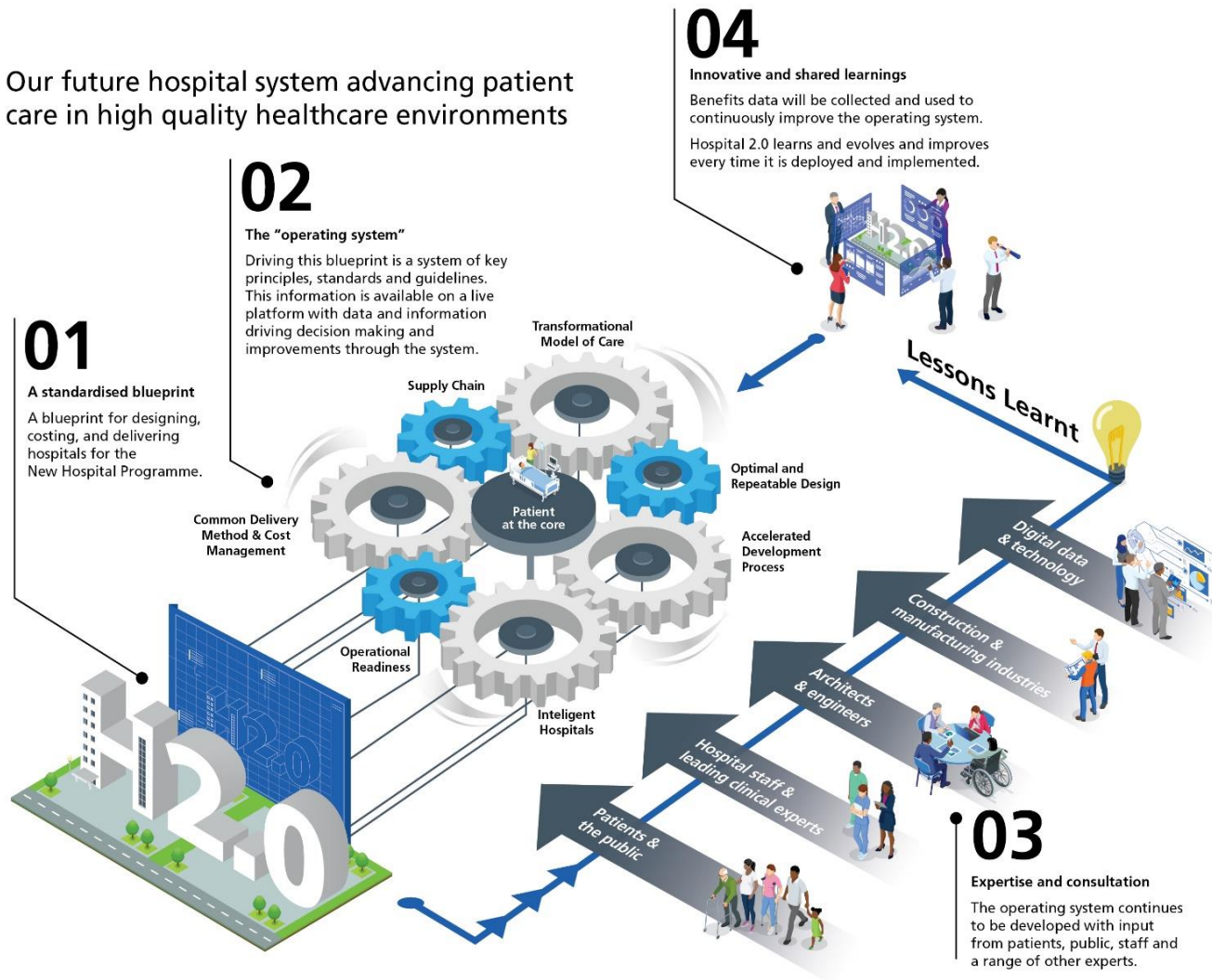
This includes the Community Diagnostic Centre, opened in 2024, which offers X-ray, ultrasound, CT and MRI scanning, as well as The James Paget Orthopaedic Centre and Oulton Suite Community Diagnostic Centre opened in 2025, and the award-winning Concept Ward.



Hospital 2.0

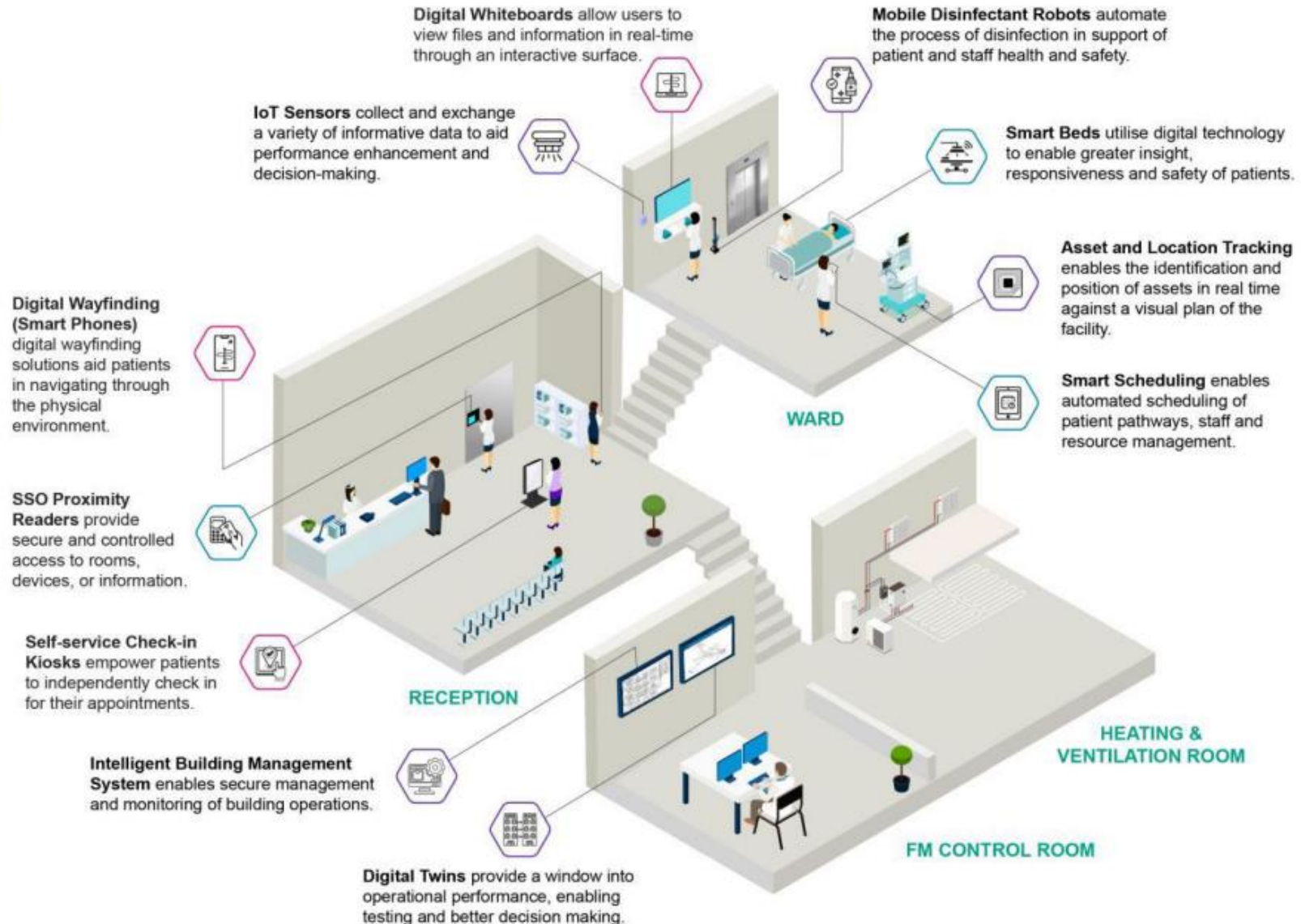


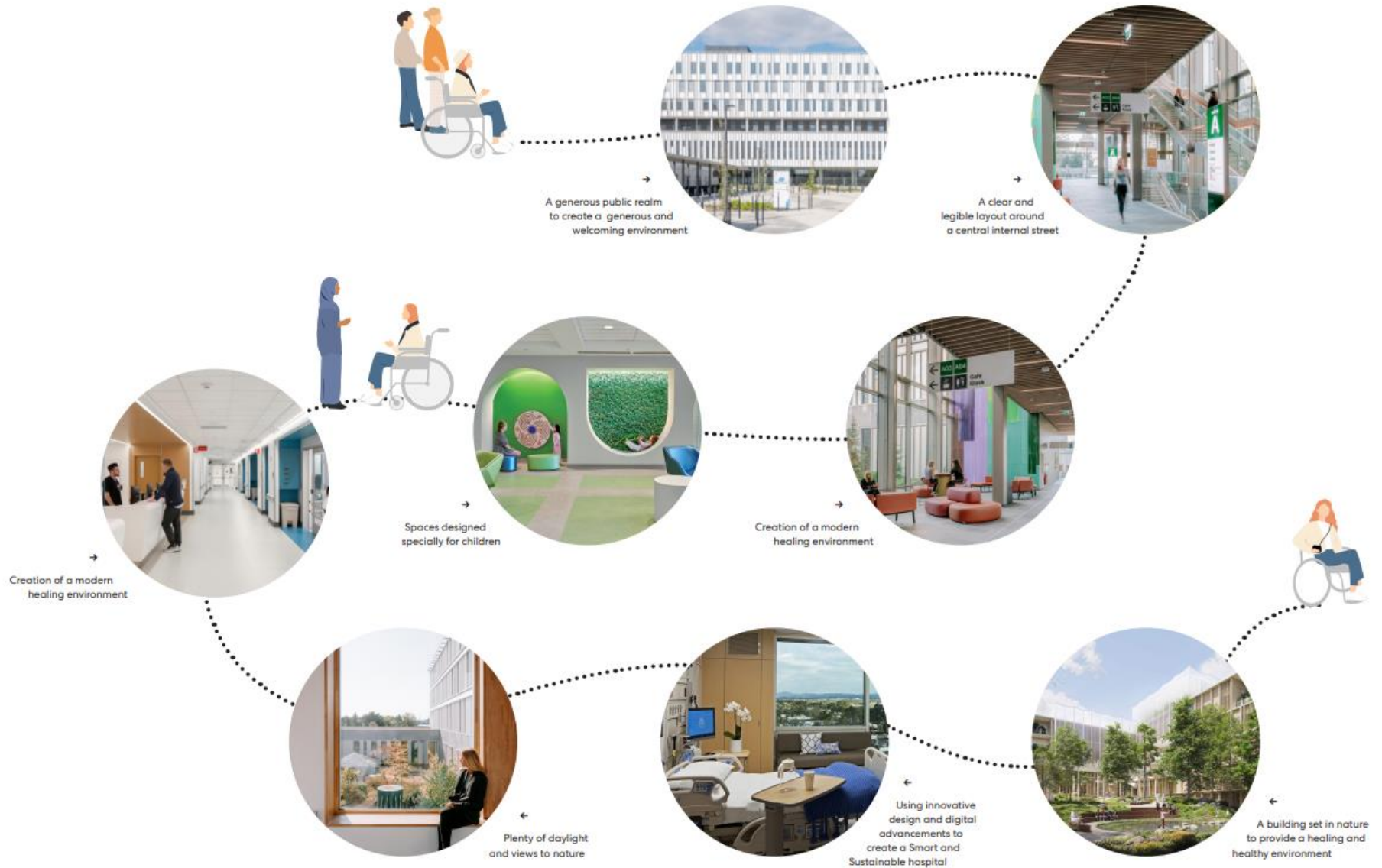
Our future hospital system advancing patient care in high quality healthcare environments



The Future Paget Programme is part of Wave 1 of the Government's New Hospital Programme, which includes a standardised approach to hospital design and construction that aims to speed up delivery times, drive down costs and deliver facilities that maximise modern technology. This approach is known as Hospital 2.0

Digital by Design





Our Landscape



The landscape of the site will be designed to enhance existing characteristics and to create an external environment that promotes health and wellbeing, and creates a welcoming environment that also supports biodiversity.



Enabling Works



To ensure the current hospital stays operational with minimal to no disruptions while the new hospital is being built, our design process incorporates enabling works so that the allocated site of the new hospital is ready for construction to start.

- **Solar Farm and site clearance:** The current Photovoltaic Solar Panels will be removed and replaced with more efficient panels installed over the existing retained buildings.
- **Carparks:** The surface carpark will be replaced by both a multi-storey carpark and a new surface carpark on the west of the site
- **Road alignment:** The new hospital will be located to the west of the current hospital, with the main entrance proposed from the east.